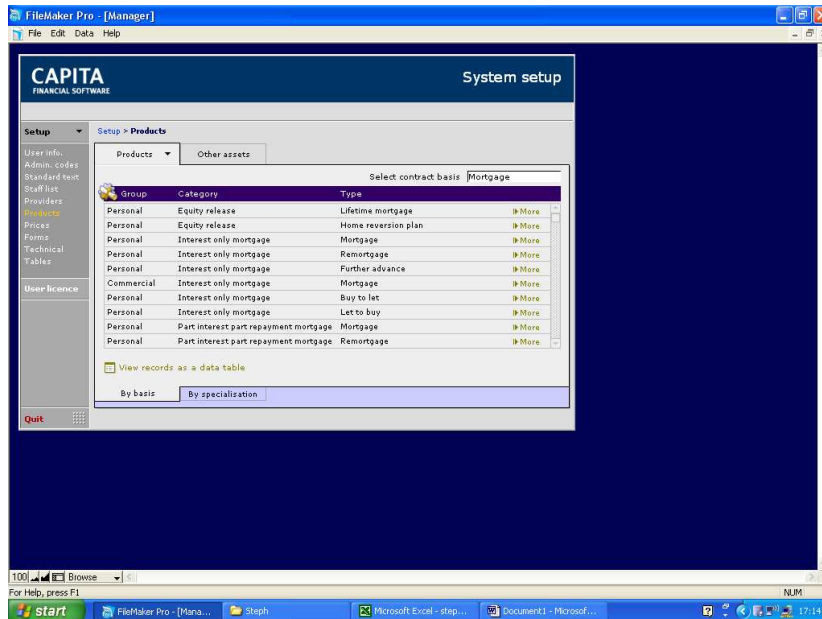
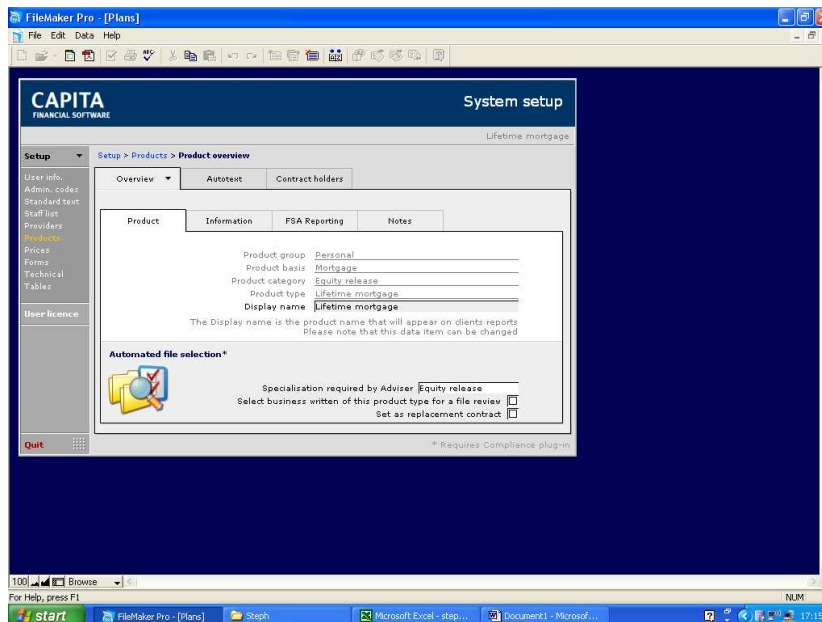


## How to Create a Found Set of Clients with a particular Asset

Click into setup from the front screen of Client Care Desktop and then click on Products.

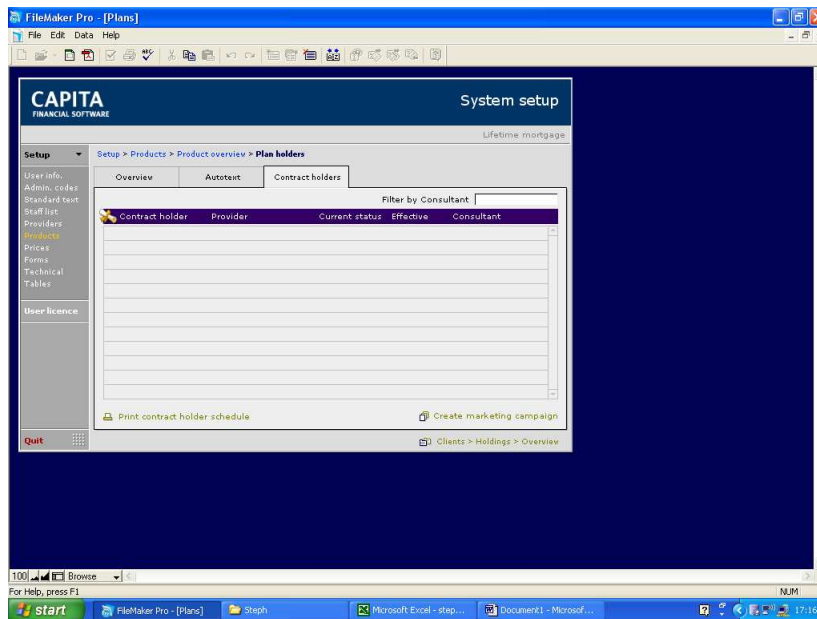


From here you will need to select the Asset that you wish to base this found set of clients on. Once you have found your Asset, click on the 'More' button to the right of the Asset.



This will now open the Asset details for you to view.

Now click on the 'Contract holders' tab at the top of the page.



Now you can view all the clients on your system who have the same Asset. Then you can either create a printable list or complete a marketing campaign wizard.